



# A human monoclonal IgE antibody that binds to MGL\_1304, a major allergen in human sweat, without activation of mast cells and basophils



Kaori Ishii, Makiko Hiragun, Takaaki Hiragun, Takanobu Kan, Tomoko Kawaguchi, Yuhki Yanase, Akio Tanaka, Shunsuke Takahagi, Michihiro Hide\*

Department of Dermatology, Institute of Biochemical and Health Sciences, Hiroshima University, 1-2-3, Kasumi, Minami-ku, Hiroshima 734-8851, Japan

## ARTICLE INFO

### Article history:

Received 23 October 2015

Accepted 29 October 2015

Available online 2 November 2015

### Keywords:

Human IgE

MGL\_1304

Sweat antigen

Atopic dermatitis

*Malassezia globosa*

ELISA

## ABSTRACT

MGL\_1304, a major allergen in human sweat for patients with atopic dermatitis and/or cholinergic urticaria, is secreted from *Malassezia globosa* on human skin. The amounts of MGL\_1304 and IgE against MGL\_1304 are evaluated by the histamine release test using basophils or mast cells sensitized with serum containing IgE against MGL\_1304, and enzyme linked sorbent assay (ELISA) using MGL\_1304 and anti-MGL\_1304 antibodies. Here, we identified a human monoclonal IgE (ABS-IgE) that binds to the high affinity IgE receptor (FcεRI) and MGL\_1304 with high affinity ( $K_D = 1.99$  nM) but does not release histamine from basophils and mast cells. An ELISA using ABS-IgE as a standard IgE revealed that the amount of IgE against MGL\_1304 (1000 U/ml) in the standard sera of patients with AD, employed in our previous report, is 32 ng/ml. A sandwich ELISA using ABS-IgE as a detection antibody showed approximately 10 times lower detection limit for MGL\_1304 than ELISA in which MGL\_1304 is directly bound to an ELISA plate. Moreover, ABS-IgE prevented histamine release from mast cells and basophils by neutralizing MGL\_1304 not only in a free form in solution, but also on FcεRI expressed on the cell surface without cell activation. ABS-IgE may be used both to quantify the amount of MGL\_1304 and anti-MGL\_1304 IgE, and possibly for the treatment of diseases caused/aggravated by type I allergy to MGL\_1304.

© 2015 Elsevier Inc. All rights reserved.

## 1. Introduction

Atopic dermatitis (AD) is a chronic pruritic skin disease occurring in an atopic background associated with altered skin barrier and immune dysregulation [1]. The impairment of the innate immune system in AD is augmented by numerous triggering factors, such as irritants, aeroallergens, food, microbial organisms and sweating [2]. We previously reported that skin test with autologous sweat was positive in approximately 80% of the patients with AD and that the semi-purified sweat antigen induced histamine release from the basophils of 77% of patients with AD [3,4] and 66% of patients with cholinergic urticaria [5]. We finally have identified a fungal protein, MGL\_1304, derived from *Malassezia globosa* (*M. globosa*), which belongs to the normal human cutaneous flora, as an antigen in sweat for patients with AD [6]. Recently, it has been revealed that human skin surface is colonized by a wide range of

fungi, such as *M. globosa*, *Malassezia restricta* and *Malassezia sympodialis* [7]. However, the major antigens of *M. globosa* recognized by serum IgE of the patients [8] were different from MGL\_1304, and not detected in sweat [6]. Moreover, the pathogenic role of commensal *Malassezia* yeasts in skin diseases has been a matter of controversy for a long time [9]. Therefore, quantification of specific IgE against MGL\_1304 is critical in the assessment and effective skin care for AD. We previously established an ELISA for specific immunoglobulins against MGL\_1304 in sera of patients with AD, using a mouse monoclonal antibody Smith2, raised against purified sweat antigen [10]. By that assay, the amount of MGL\_1304-specific IgE may be quantified in comparison with a bulk stock of sera collected from patients with AD, but not measured as weight/volume concentrations. In this study, we examined several human monoclonal IgE antibodies and have identified a clone that specifically binds to MGL\_1304. Unexpectedly, it causes histamine release in response to anti-IgE, but not by MGL\_1304 when bound to mast cells and basophils. We revealed the binding characteristics of this IgE antibody, and incorporated it as a standard IgE in ELISA to

\* Corresponding author.

E-mail address: [ed1h-w1de-road@hiroshima-u.ac.jp](mailto:ed1h-w1de-road@hiroshima-u.ac.jp) (M. Hide).

measure human IgE against MGL\_1304, and as a capture antibody in ELISA to detect MGL\_1304 at high sensitivity, as well.

## 2. Materials and methods

### 2.1. Purification of MGL\_1304 from culture of *M. globosa*

MGL\_1304 was purified from culture supernatant of *M. globosa* as previously described [6]. The purified MGL\_1304 from *M. globosa* was named as “sMGL\_1304”. The amount of sMGL\_1304 was measured as the amount of protein using a protein assay kit, Micro BCA™ protein assay (Thermo Fisher Scientific, Waltham, MA, USA).

### 2.2. Recombinant proteins

Each recombinant MGL\_1304 fused with the Triggering Factor (TF) and tagged with polyhistidine (His-tag) were expressed by *Escherichia coli* and purified as previously described (TF-MGL\_1304) [6].

### 2.3. Enzyme-linked immunosorbent assay (ELISA)

For the ELISA with direct-coated antigen, microtiter 96-well plates (Greiner, Frickenhausen, Germany) were coated with 1 µg/ml or a titrated concentrations of sMGL\_1304, cedar pollen extract (LSL, Tokyo, Japan), or Der f1 (Asahi Beer, Tokyo, Japan) in phosphate-buffered saline (PBS) at 4 °C overnight. After aspiration, the plates were blocked with 5% skim milk in PBS at room temperature for 1 hr. After washing three times with wash buffer (0.05% Tween 20 in PBS), four commercially available human IgE clones (ANTIBODYSHOP in BioPorto Diagnostics A/S, Gentofte, Denmark; Merck Millipore, Darmstadt Germany; GenWay Biotech, San Diego, CA, USA; AbD Serotec, Oxford, UK) or Smith2, a mouse monoclonal antibody against MGL\_1304, obtained by immunization with semi-purified human sweat antigen [6], at indicated concentrations in 0.5% skim milk in PBS, were incubated at room temperature for 1 hr. After washing four times, each well was incubated with horseradish peroxidase-conjugated goat anti-human IgE (KPL, Gaithersburg, MD, USA) or horseradish peroxidase-conjugated horse anti-mouse IgG (Cell Signaling Technology, Boston, MA, USA) diluted at 1/2000 in 0.5% skim milk at room temperature for 1 h. Color development was achieved by substrate solution (TMB Microwell Peroxidase Substrate System; KPL) and stopped by 1% hydrochloric acid based solution. The absorbance at 450 nm was measured using a microplate spectrophotometer (Benchmark plus®; BIO-RAD, Berkeley, CA, USA). For the inhibition of IgE binding to TF-MGL\_1304 or sMGL\_1304, the human monoclonal IgE obtained from ANTIBODYSHOP (ABS-IgE) was pre-incubated at 50 ng/ml with indicated concentrations of sMGL\_1304 or TF-MGL\_1304 at 4 °C overnight and used as detection antibody after blocking with 5% skim milk as described above. For sandwich ELISA, 50 µl of Smith2 at 5 µg/ml in PBS was incubated in a 96-well plate at 4 °C overnight. The blocking and washing methods were the same as those for the direct-coat antigen assay. After blocking and washing, 100 µl of various concentrations of sMGL\_1304 or pre-filtrated sweat were added and incubated in each well at room temperature for 2 h. After washing four times, 100 µl of ABS-IgE at 0.5 µg/ml in 0.5% skim milk in PBS was incubated in each well at room temperature for 1 h. Subsequent reactions of HRP-conjugated antibody and detection were performed as same as the direct-coat antigen assay. All assays were performed in triplicate.

### 2.4. Surface plasmon resonance experiments

The binding characteristics between sMGL\_1304 and ABS-IgE

were studied by surface plasmon resonance (SPR) using the Biacore X® instrument (GE Healthcare, Buckinghamshire, UK), and HEPES buffered saline (150 mM NaCl, 3.4 mM EDTA pH 7.4) for sample perfusion. Diluted sMGL\_1304 (29.4, 58.8, 294, 588 nM) were injected serially at flow rate of 20 µl/min to ABS-IgE immobilized on a sensor chip with amino-coupling method according to the manufacturer's instructions.

### 2.5. Western blot analysis

Samples were subjected into 5–20% gradient SDS-PAGE or 15% Native-PAGE gel (ATTO, Tokyo, Japan) and transferred to a polyvinylidene fluoride membrane as described previously [6]. Immunoblotting was performed with 1 µg/ml of ABS-IgE, Smith2, or anti-His-tag antibody (Merck Millipore, Darmstadt, Germany) at 4 °C overnight. For visualization, horseradish peroxidase-conjugated secondary antibodies and chemiluminescence were used. All images were adjusted by using “auto levels” function of Adobe Photoshop® Ver. 13.0 (Adobe System, San Jose, CA, USA).

### 2.6. Histamine release test (HRT)

The histamine release test (HRT) with human basophils or RBL-48 cells, a rat mast cell line expressing the  $\alpha$ -subunit of the human high-affinity IgE receptor (Fc $\epsilon$ RI), was performed as described previously [3]. Sweat samples were collected from nine healthy volunteers and filtered with a 0.2 µm filter (PALL, Port Washington, NY, USA). In HRT, basophils were stimulated with five times-diluted sweats or MGL\_1304 pre-incubated with or without ABS-IgE (Fig. 3B, Fig. 4A and B). For HRT using basophils re-sensitized with IgE, basophils of a non-atopic volunteer were treated with lactic acid solution (pH 3.9) to remove endogenous IgE, and incubated with twice-diluted serum of a patient with AD or 100 ng/ml ABS-IgE. RBL-48 cells were incubated with ABS-IgE at 50 ng/ml or twenty-times diluted serum of a patient with AD or a normal control at 37 °C overnight. The cells were stimulated with 1 µg/ml of goat anti human IgE antibody (Bethyl Laboratories, TX, USA) or 1 µg/ml of 6F7, monoclonal antibody against Fc $\epsilon$ RI [11], 10 ng/ml of sMGL\_1304 or 1 µg/ml of mite antigen (Mite-Df, LSL).

### 2.7. Statistical analysis

All data were obtained from three or more independent experiments in triplicate and shown as average  $\pm$  standard deviation, or otherwise as described in figure legends. P values were calculated in Graph-Pad Prism 6 (GraphPad Software, La Jolla, CA, USA). Differences were considered as significant at values of  $P < 0.01$  using one-way ANOVA and Dunnett's multiple comparison test.

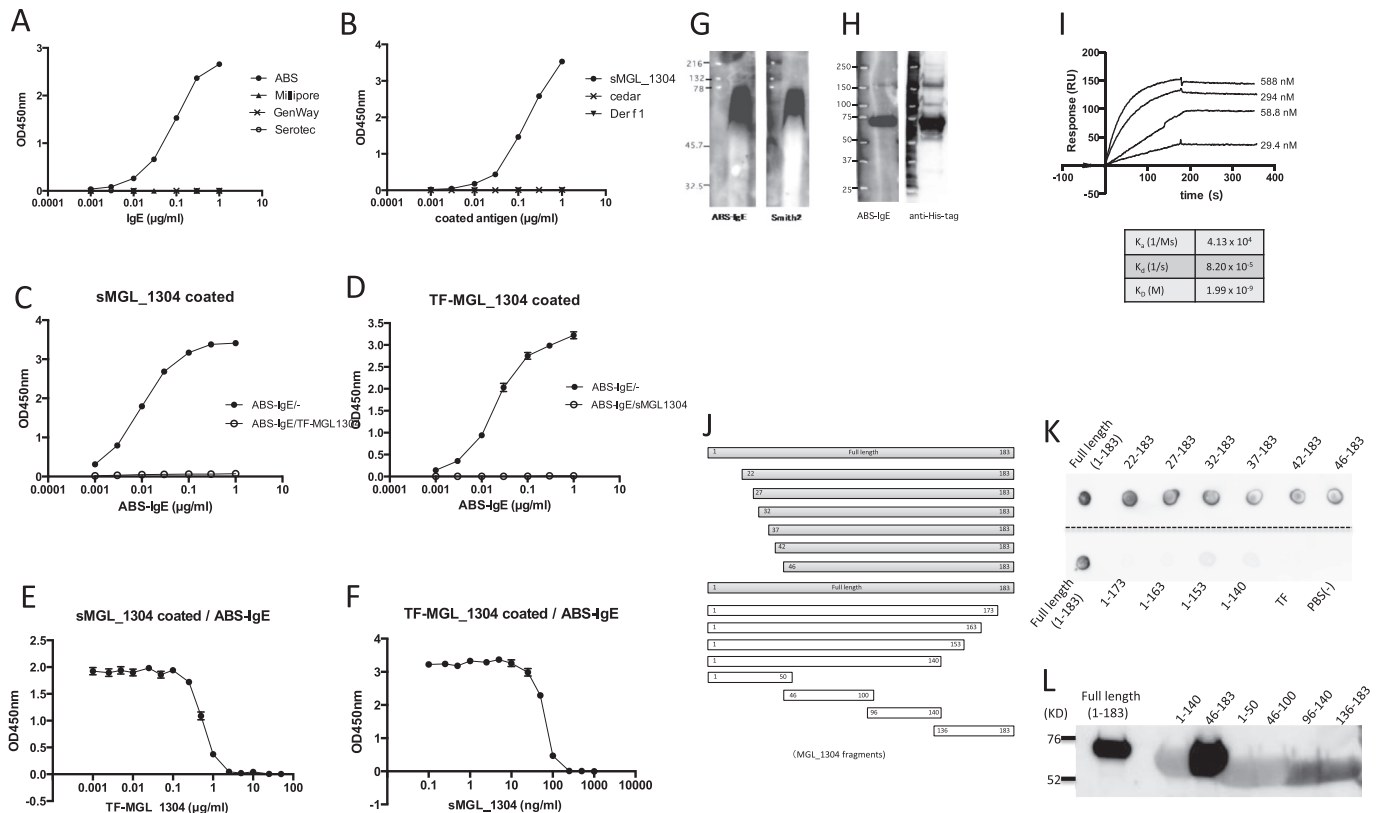
### 2.8. Study approval

Sweat samples from healthy volunteers and blood samples from patients with AD and healthy volunteers were obtained with written informed consent. All studies were approved by the ethics committee of Hiroshima University.

## 3. Result

### 3.1. ABS-IgE recognizes MGL\_1304

In a study to develop ELISA for IgE against MGL\_1304, an IgE clone obtained from ANTIBODYSHOP which was employed as negative controls showed unexpected binding to MGL\_1304 (Fig. 1A). We named this IgE as “ABS-IgE” and assessed its binding to MGL\_1304, Der f1 (mite antigen) and cedar extract at various concentrations of



**Fig. 1.** ABS-IgE binds to MGL<sub>1304</sub>. (A) sMGL<sub>1304</sub> coating ELISA plates at 1  $\mu$ g/ml and was detected by one monoclonal (ABS) IgE antibody, but not by the other three monoclonal (Milipore, GenWay, Serotec) IgE antibodies in a dose-dependent manner of IgE. (B) ABS-IgE bound to sMGL<sub>1304</sub>, but not to Der f1 or cedar antigens, in a manner of dose-dependency of the sMGL<sub>1304</sub> directly bound to ELISA plates. (C) The dose dependent binding of ABS-IgE to sMGL<sub>1304</sub> that coated an ELISA plate at 1  $\mu$ g/ml was abolished by the pre-incubation with or without 100  $\mu$ g/ml TF-MGL<sub>1304</sub>. (D) Conversely, the binding of ABS-IgE to TF-MGL<sub>1304</sub> bound to an ELISA plate at 3  $\mu$ g/ml was completely inhibited by pre-incubation with 10  $\mu$ g/ml sMGL<sub>1304</sub>. (E,F) The binding of ABS-IgE (1  $\mu$ g/ml) to TF-MGL<sub>1304</sub> or sMGL<sub>1304</sub> coating an ELISA plate at 3  $\mu$ g/ml or 0.1  $\mu$ g/ml was inhibited, respectively by the other antigens in a dose-dependent manner. (G) Western blotting of sMGL<sub>1304</sub> (0.5  $\mu$ g/lane) in native condition using ABS-IgE and Smith2. (H) Western blotting of TF-MGL<sub>1304</sub> (2  $\mu$ g/lane) in reduced condition using ABS-IgE and anti-His-tag antibody. (I) SPR analysis of the binding affinity between ABS-IgE and sMGL<sub>1304</sub>. Diluted sMGL<sub>1304</sub> (29.4, 58.8, 294, 588 nM) was injected to immobilized ABS-IgE on a sensor chip.  $K_a$ : association rate constant,  $K_d$ : dissociation rate constant,  $K_D$ : dissociation constant. The figure shows a representative result of two independent experiments. (J) A schematic figure of MGL<sub>1304</sub> fragments. (K) Dot blotting of truncated recombinant TF-MGL<sub>1304</sub> (5  $\mu$ g/spot) by ABS-IgE. (L) Western blotting of recombinant TF-MGL<sub>1304</sub> fragments (5  $\mu$ g/lane) by ABS-IgE.

ABS-IgE. Neither Der f1 nor cedar extract was detected by ABS-IgE (Fig. 1B), whereas ABS-IgE bound to MGL<sub>1304</sub> in a dose-dependent manner of sMGL<sub>1304</sub> coated on an ELISA plate. Moreover, all ABS-IgE binding at concentrations from 1 ng/ml to 1  $\mu$ g/ml to sMGL<sub>1304</sub> that coated an ELISA plate at 1  $\mu$ g/ml was abolished by the pre-incubation of ABS-IgE with 100  $\mu$ g/ml of TF-MGL<sub>1304</sub> (Fig. 1C). Conversely, similar binding and inhibition were observed, when an ELISA plate was coated with TF-MGL<sub>1304</sub> at 3  $\mu$ g/ml, and ABS-IgE was pre-incubated with sMGL<sub>1304</sub> at 10  $\mu$ g/ml (Fig. 1D). Furthermore, the binding of 1  $\mu$ g/ml ABS-IgE to sMGL<sub>1304</sub> coated on an ELISA plate was inhibited by a various concentrations of TF-MGL<sub>1304</sub> in a dose-dependent manner, or vice versa (Fig. 1E, F).

In western blot analyses under non-reduced condition without SDS (native gel), sMGL<sub>1304</sub> was detected by ABS-IgE as a smear band, as by Smith2 (Fig. 1G). In reduced condition, TF-MGL<sub>1304</sub> was detected as a solid band by either ABS-IgE or anti-His-tag antibody (Fig. 1H). We further analyzed the binding characteristics of ABS-IgE for MGL<sub>1304</sub> by SPR. The analysis verified that the affinity of ABS-IgE to MGL<sub>1304</sub> by the dissociation constant of  $1.99 \times 10^{-9}$  M, which is similar to other standard antigen–antibody reactions ( $10^{-6}$  M  $>$   $K_D$   $>$   $10^{-9}$  M) (Fig. 1I).

To identify the epitope of MGL<sub>1304</sub> recognized by ABS-IgE, we performed blot analyses with recombinant fragments of MGL<sub>1304</sub> (Fig. 1J,K,L). Most binding to ABS-IgE was observed in the fragments

of TF-MGL<sub>1304</sub> that preserve amino acids from the 46th to the end of C-terminal. In contrast, 10 or more amino acid truncations at C-terminal abolished the binding (Fig. 1K). The binding of ABS-IgE to the fragment of 46th amino acid to the C-terminal was detected by western blotting at the expected position of molecular weight. However, ABS-IgE hardly detected 4 overlapped fragments of MGL<sub>1304</sub> consisting of 1–50th, 46–100th, 96–140th, 136–183th amino acids, respectively (Fig. 1L). These results suggest that ABS-IgE recognizes a conformational structure made by the sequence of 46th to 183th amino acid of MGL<sub>1304</sub>, regardless of the glycosylation.

### 3.2. Sandwich ELISA for the measurement of MGL<sub>1304</sub>

When an ELISA plate was directly coated with sMGL<sub>1304</sub>, ABS-IgE and Smith2 detected sMGL<sub>1304</sub> that coated the plate at more than 0.3 ng/ml and that at more than 30 ng/ml, respectively (Fig. 2). When the plates were pre-coated with ABS-IgE and detected with Smith2, the minimum detection limit was almost the same as that using ABS-IgE for sMGL<sub>1304</sub> directly coated on a plate. When plates were pre-coated with Smith2 and detected with ABS-IgE, approximately 10 times lower amount of MGL<sub>1304</sub> was detected than that using an ELISA plate directly coated with sMGL<sub>1304</sub> (Fig. 2).

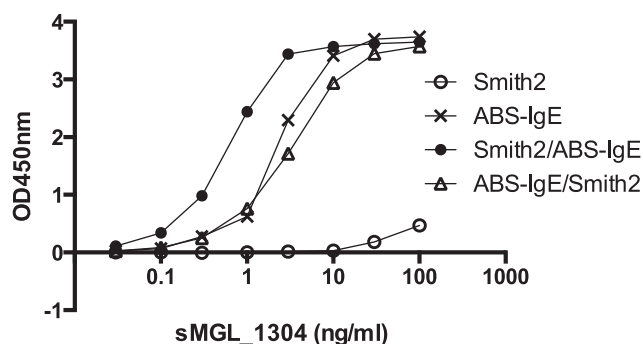


Fig. 2. ELISA for sMGL<sub>1304</sub> that directly adhered to a plate or bound via ABS-IgE or Smith2 antibodies (sandwich ELISA).

### 3.3. The measurement of MGL<sub>1304</sub> in human sweat

We next measured the amount of MGL<sub>1304</sub> in sweat collected from nine healthy donors by the sandwich ELISA using ABS-IgE as a capture antibody. The histamine release activity of the same sweat samples were also evaluated by using basophils of a patient with AD. Sweat samples subjected to HRT were diluted five times, taking into account that the minimal and the maximum release of histamine induced by human sweat [12]. The concentrations of MGL<sub>1304</sub> were determined as 0.6–8.0 ng/ml ( $3.76 \pm 2.64$  ng/ml, mean  $\pm$  SD) (Fig. 3A), showing a strong correlation to the degree of histamine release by sweat samples (Fig. 3B). The concentration of IgE against MGL<sub>1304</sub> defined as 1 unit using the sera collected and pooled as a standard from 20 patients with AD in our previous study [10] was determined as 32 pg.

### 3.4. Neutralization of histamine release activity of MGL<sub>1304</sub> by ABS-IgE

The pretreatment of sMGL<sub>1304</sub> with 1  $\mu$ g/ml ABS-IgE shifted the dose-dependent curve of MGL<sub>1304</sub> for histamine release to the right by close to one log (Fig. 4A). The histamine release induced by 3 ng/ml sMGL<sub>1304</sub>, which induces the maximal release of histamine, was neutralized by ABS-IgE in a dose-dependent manner at 1–30 ng/ml. No further effect of ABS-IgE was observed at concentrations higher than 100 ng/ml (Fig. 4B).

### 3.5. ABS-IgE does not induce histamine release in response to MGL<sub>1304</sub>

Since ABS-IgE is a human monoclonal IgE, it was predicted to

sensitize human basophils and induce histamine release in response to MGL<sub>1304</sub>. Indeed, basophils sensitized with ABS-IgE released histamine in response to anti-IgE, endorsing the occupation of Fc $\epsilon$ RI with IgE (Fig. 4C, D). The removal/decrease of endogenous IgE and re-sensitization with AD serum IgE was also verified by the reaction to 6F7, a monoclonal antibody that binds to the  $\alpha$ -subunit of Fc $\epsilon$ RI in competition with IgE [11]. Nevertheless, basophils obtained from a patient with AD and those from a healthy control re-sensitized with ABS-IgE showed no release of histamine in response to sMGL<sub>1304</sub>. Likewise, when RBL-48 cells, a rat mast cell line, expressing the  $\alpha$ -subunit of human Fc $\epsilon$ RI, did not release histamine upon sMGL<sub>1304</sub> stimulation (Fig. 4E). These results indicate that ABS-IgE binds to MGL<sub>1304</sub> and Fc $\epsilon$ RI, but does not induce histamine release when they sensitize mast cells and basophils.

## 4. Discussion

The ABS-IgE clone has been established from a human B cell of a healthy donor and used as a non-specific IgE monoclonal antibody [13,14]. In this study, we demonstrated that ABS-IgE specifically binds to MGL<sub>1304</sub> with a  $K_D$  value of 1.99 nM and Fc $\epsilon$ RI, without histamine release from basophils and mast cells. Because of these unique characteristics, ABS-IgE has great advantages in both clinical diagnosis and treatment of diseases mediated by MGL<sub>1304</sub>. In general, the amount of antigen-specific IgE is expressed using a unit of “International Unit (IU)” or “U<sub>A</sub>”. The amount of 1 IU, equivalent to 2.4 ng IgE [15] was established as the amount of total IgE that binds to anti-IgE antibody in standard serum used as a reference in each assay [10]. The amount of antigen-specific IgE, however, was detected as the amount of IgE that specifically binds to the antigen. Thus, it largely depends on the binding characteristics of IgE to the antigens and may vary among different assay systems [16]. Therefore, it is expected to set standard IgE, which is antigen-specific, ideally monoclonal antibody for each antigen. Such a standard IgE provides data as weight (g)/volume (L), which is comparable among assays. ABS-IgE is suitable as a standard IgE, not only because of its human origin, but also because of its epitope. ABS-IgE was suggested to recognize a conformational structure of MGL<sub>1304</sub>, as IgE in all four sera of the patients with AD examined in our previous study [6]. While the serum IgE recognized a structure mostly consisting of the amino acid sequence from the 32nd to the 173th of MGL<sub>1304</sub>, ABS-IgE recognizes a structure from the 46th to the C-terminal.

The second advantage of ABS-IgE is that it captures MGL<sub>1304</sub> preserving the epitopes for Smith2 mouse IgG monoclonal antibody. Based on this characteristic, we constructed a sandwich ELISA to measure the amount of MGL<sub>1304</sub> with high sensitivity. In

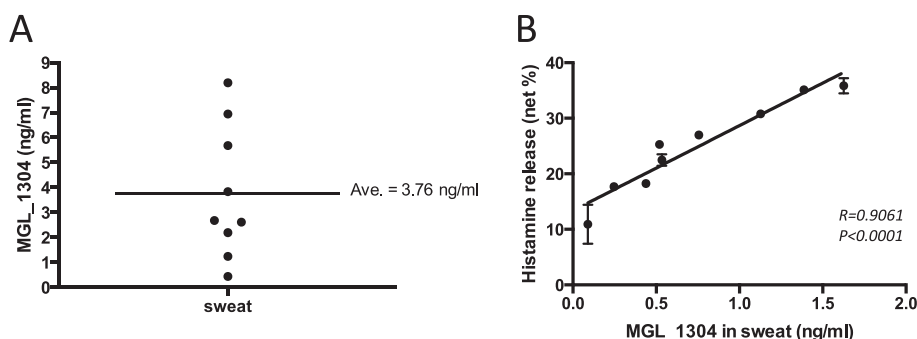
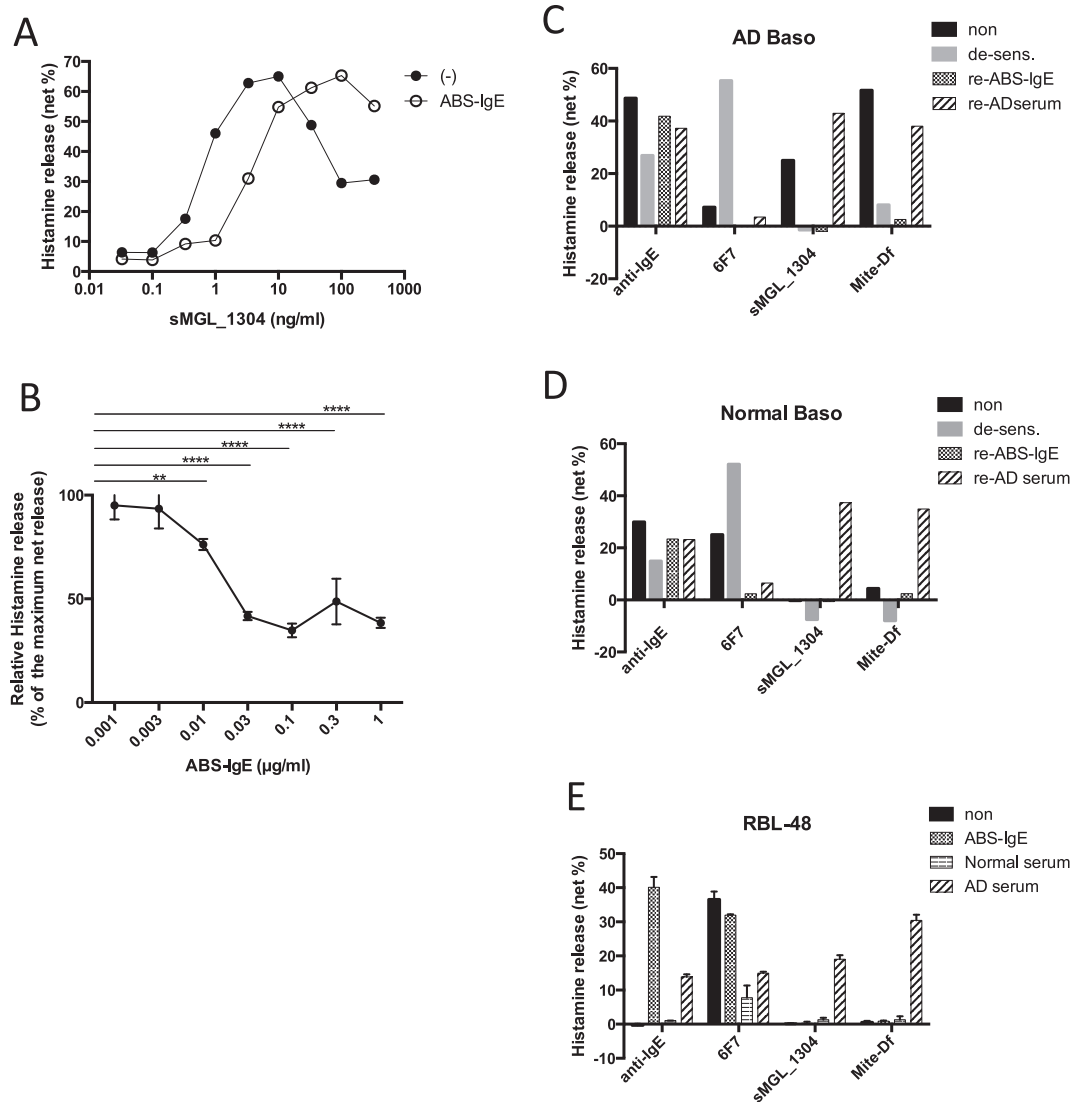


Fig. 3. Relationship of MGL<sub>1304</sub> concentration and histamine release activity in sweat. (A) The MGL<sub>1304</sub> concentrations in sweat of nine healthy volunteers were measured with sandwich ELISA. (B) Histamine release activities in 5-times diluted sweat samples were measured using basophils of a patient with AD. The figure shows a representative result of two independent experiments in duplicate.





**Fig. 4.** ABS-IgE neutralizes the histamine release activity of MGL\_1304. (A) Histamine release from basophils in response to MGL\_1304 pre-incubated with or without ABS-IgE (1 μg/ml). (B) The effect of pre-incubation of 3 ng/ml MGL\_1304 with various concentrations of ABS-IgE on histamine release. Data shows relative % against the histamine release without ABS-IgE (mean ± SD, 33.82 ± 1.66%). \*\*:  $P = 0.0018$ , \*\*\*\*:  $P < 0.0001$ . (C, D) The effect of re-sensitization of basophil with ABS-IgE or serum of a patient with AD on a histamine release in response to anti-IgE, anti-IgE receptor competitive with IgE (6F7), sMGL\_1304 and mite antigen (Mite-Df). Basophils were obtained from a patient with AD (C) or a normal control (D), and used as they are (non), after the removal of endogenous-IgE (de-sens), or the removal and re-sensitization with ABS-IgE (re-ABS-IgE) or serum of a patient with AD (re-AD serum). Data in C and D shows a representative result of two independent experiments in duplicate, respectively. (E) The effect of sensitization of RBL-48 cells expressing the  $\alpha$ -subunit of human FcεRI with or without (non) ABS-IgE (50 ng/ml, ABS-IgE), serum of a healthy volunteer (Normal serum), serum of a patient with AD (1:20 diluted, AD serum) or on histamine release.

this sandwich ELISA, Smith2 coating of an ELISA plate captures MGL\_1304 in sample solutions, and ABS-IgE detects the amount of MGL\_1304 captured by Smith2 on the plate. By this system, the concentration of MGL\_1304 in sweat of nine healthy volunteers was revealed as  $3.76 \pm 2.64$  ng/ml, and showed a good correlation with the histamine release activity in sweat ( $r = 0.9197$ ,  $p < 0.0001$ ,  $n = 9$ , Fig. 3). The y-intercept shown in Fig. 3B at zero concentration of MGL\_1304 suggests the presence of unidentified substances in sweat in addition to MGL\_1304. Homologous proteins produced and released by the other *Malassezia* species, such as *M. restricta*, and *M. sympodialis* on human skin, is a candidate of such activities, and needed to be elucidated by a panel of specific antibodies and proteins produced by these *Malassezia* species. The high correlation of MGL\_1304 concentration to the histamine release activity in human sweat suggests that MGL\_1304 is the major antigen for histamine release, or ABS-IgE cross-reacts with MGL\_1304

homologous antigens released from the other *Malassezia* species on the patients. As compared with sera, sweat is not easy to collect, and likely to vary in terms of MGL\_1304 concentration by temperature, location of the body, seasons and exercise of the subjects. Thus, measuring the amount of MGL\_1304 in local sweat on the surface of various sites of the body on various occasions may elucidate a detailed mechanism for sweat allergy. The assay developed in this study is suitable for such studies, since it requires only tens or less microliters of sweat to quantitate the amount of MGL\_1304. Moreover, ABS-IgE may also be used as a standard for assays to measure the amount of anti-MGL\_1304 IgE in human sera, since it is human IgE. By this assay, 1 unit of anti-MGL\_1304 IgE, defined in our previous study, has been revealed as 32 pg, and the titer of serum IgE against MGL\_1304 can be compared with those against other antigens in weight/volume basis.

The third unique and advantageous feature of ABS-IgE is that it

neutralizes the histamine release activity of MGL\_1304, but does not activate basophils and mast cells in response to MGL\_1304 on the cell surface. The binding of ABS-IgE to FcεRI appears normal in that both basophils and RBL-48 mast cells acquired the reactivity to anti-IgE by the sensitization with ABS-IgE. Moreover, the dissociation constant ( $K_D$ ) of ABS-IgE for MGL\_1304 ( $1.99 \times 10^{-9}$  M) is within an ordinal or somewhat low range as compared with general antigen–antibody interactions, indicating the strong binding of ABS-IgE to MGL\_1304. Since the epitope of MGL\_1304 for ABS-IgE consists of a conformational structure, one molecule of MGL\_1304 may expose only one epitope to bind one molecule of ABS-IgE, and not cross-link multiple FcεRI on the cells. In any case, this feature should be a big advantage of ABS-IgE in prevention and treatment of sweat allergy. Recently, it has been revealed that numerous kinds of microbiotas (e.g., bacteria, fungi and viruses) stably construct the normal cutaneous flora [7]. Antimycotic treatments could suppress the excess growth of microbiotas. However, the amounts of histamine release activities in sweat of patients with AD were not different from those of healthy controls [3], suggesting that the increase of *M. globosa* itself is not critical, despite the increase of sensitivity of patients in sweat allergy. Moreover, a disturbance of normal flora by non-specific antimycotic treatments may cause unexpected adverse events in the patients. Thus, specific removal and/or inactivation of only pathological antigen is preferred to non-specific antimycotic treatments. To date, a variety of antigen-specific human IgG and non-specific human immunoglobulins have been used for the treatment of various infectious and/or immunogenic inflammatory diseases [17]. IgE has never been used for these purposes, because of its potential to activate mast cells and basophiles by crosslinking FcεRIs. Moreover, IgE is even targeted by a pharmaceutical IgG (omalizumab) in the treatment of bronchial asthma and refractory urticaria [18,19]. Nevertheless, antigen specific IgE that occupies FcεRI without cell activation, such as ABS-IgE, may be even more beneficial than IgG with the same specificity, because it does not only neutralized causative antigens, but also prevents the sensitization of FcεRI with pathological IgE that activates mast cells and basophils.

In conclusion, ABS-IgE, a human monoclonal IgE against MGL\_1304 may be used to quantify the amount of MGL\_1304 and anti-MGL\_1304 IgE, and possibly for the treatment of diseases caused/aggravated by type I allergy to MGL\_1304, such as AD and cholinergic urticaria. Further studies using this antibody should elucidate detailed mechanisms of *Malassezia* species in sweat allergy and its potential for therapeutic purposes.

## Acknowledgments

We thank our clinical staff for assistance in collecting the sweat and blood samples, and Dr Faiz Kermani for his manuscript review. We also thank Ms. Kazue Uchida for technical assistance. This work was carried out in part at the Analysis Center of Life Science, Natural

Science Center for Basic Research and Development, Hiroshima University.

## Transparency document

Transparency document related to this article can be found online at <http://dx.doi.org/10.1016/j.bbrc.2015.10.154>.

## References

- [1] M. Boguniewicz, D.Y. Leung, Atopic dermatitis: a disease of altered skin barrier and immune dysregulation, *Immunol. Rev.* 242 (2011) 233–246.
- [2] M.A. Morren, B. Przybilla, M. Bamelis, et al., Atopic dermatitis: triggering factors, *J. Am. Acad. Dermatol.* 31 (1994) 467–473.
- [3] M. Hide, T. Tanaka, Y. Yamamura, et al., IgE-mediated hypersensitivity against human sweat antigen in patients with atopic dermatitis, *Acta Derm. Venereol.* 82 (2002) 335–340.
- [4] A. Tanaka, T. Tanaka, H. Suzuki, et al., Semi-purification of the immunoglobulin E-sweat antigen acting on mast cells and basophils in atopic dermatitis, *Exp. Dermatol.* 15 (2006) 283–290.
- [5] S. Takahagi, T. Tanaka, K. Ishii, et al., Sweat antigen induces histamine release from basophils of patients with cholinergic urticarial associated with atopic diathesis, *Br. J. Dermatol.* 160 (2009) 426–428.
- [6] T. Hiragun, K. Ishii, M. Hiragun, et al., Fungal protein MGL\_1304 in sweat is an allergen for atopic dermatitis patients, *J. Allergy Clin. Immunol.* 132 (2013) 608–615.
- [7] K. Findley, J. Oh, J. Yang, et al., Topographic diversity of fungal and bacterial communities in human skin, *Nature* 498 (2013) 367–372.
- [8] T. Koyama, T. Kanbe, A. Ishiguro, et al., Antigenic components of *Malassezia* species for immunoglobulin E antibodies in sera of patients with atopic dermatitis, *J. Dermatol. Sci.* 26 (2001) 201–208.
- [9] F.J. Cabanes, *Malassezia* yeast: how many species infect human and animals? *PLOS Pathog.* 10 (2014) 1–4.
- [10] M. Hiragun, T. Hiragun, K. Ishii, et al., Elevated serum IgE against MGL\_1304 in patients with atopic dermatitis and cholinergic urticaria, *Allergol. Int.* 63 (2014) 83–93.
- [11] M. Hide, D.M. Francis, C.E.H. Grattan, et al., Autoantibodies against the high-affinity IgE receptor as a cause of histamine release in chronic urticarial, *N. Engl. J. Med.* 328 (1993) 1599–1604.
- [12] T. Kan, T. Hiragun, K. Ishii, et al., Evaluation of recombinant MGL\_1304 produced by *Pichia pastoris* for clinical application to sweat allergy, *Allergol. Int.* 64 (2015) 266–271.
- [13] ANTIBODYSHOP Product Specification (Product No. DIA HE1) [http://www.bioporto.com/Products/Human-IgE-\(non-immune\).aspx](http://www.bioporto.com/Products/Human-IgE-(non-immune).aspx) (accessed 01.10.15).
- [14] S. Nunomura, S. Shimada, Y. Kametani, et al., Double expression of CD34 and CD117 on bone marrow progenitors is a hallmark of the development of functional mast cell of *Callithrix jacchus* (common marmoset), *Int. Immunol.* 24 (2012) 593–603.
- [15] G. Woszczek, M.L. Kowalski, M. Borowicz, Association of asthma and total IgE levels with human leucocyte antigen-DR in patients with grass allergy, *Eur. Respir. J.* 20 (2002) 79–85.
- [16] P.B. Szecsi, S. Stender, Comparison of Immunoglobulin E measurements on IMMULITE and ImmunoCAP in samples consisting of allergen-specific mouse-human chimeric monoclonal antibodies towards allergen extracts and four recombinant allergens, *Int. Arch. Allergy Immunol.* 162 (2013) 131–134.
- [17] E. Seung, A.M. Tager, Humoral immunity in humanized mice: a work in progress, *J. Infect. Dis.* 208 (2013) S155–S159.
- [18] J.R. Stokes, T.B. Casale, The use of anti-IgE therapy beyond allergic asthma, *J. Allergy Clin. Immunol. Pract.* 3 (2015) 162–166.
- [19] A.P. Kaplan, K. Joseph, S.S. Saini, How omalizumab came to be studied as a therapy for chronic spontaneous/idiopathic urticaria, *J. Allergy Clin. Immunol. Pract.* 3 (2015) 648.